

Morgan and Mona Offshore Wind Farm

Notice to Mariners

NtM Number	Morgan and Mona Offshore Windfarms/018 (outlining nearshore offshore geotechnical surveys)	
Date of Issue	10.06.22	
1 Planned Activity		
<p>The offshore geotechnical survey of the proposed Morgan (North) and Mona (South) Offshore Wind Farm Project array areas will commence on the 14 June 2022. The investigation involves the drilling, sampling and coring of 30 boreholes throughout the two proposed areas, utilising the vessel <i>Fugro Synergy</i>. The vessel will be stationary at each borehole location for up to 3 days to allow the samples and cores to be taken from the seabed.</p> <p>In addition to the above, further offshore geotechnical survey of the proposed Morgan (North) and Mona (South) Offshore Wind Farm Project array areas will commence on the 19 June 2022. The investigation involves acquiring up to 120 Cone Penetration Tests (CPTs) (deep push) throughout the two proposed areas, utilising the vessel <i>Normand Mermaid</i>. The vessel will be stationary at each CPT location for up to 6 hours to allow the samples to be taken from the seabed.</p> <p>Contact details for the Fishing Industry Representative are provided below.</p>		
2 Permissions in place		
Licencing Authority	Licence Number	
NRW	RML2203 (Marine Licence)	
MMO	Application Pending	
3 Geographic co-ordinates and chart of survey area <i>All positions quoted in WGS84: latitude /longitude (in degrees decimal minutes)</i>		
See attached figure and list of coordinates.		
4 Safe clearances, navigation safety features and safety notes for mariners		
<p>All vessels are requested to maintain a safe distance (0.5 km) from the survey vessel <i>Fugro Synergy</i> at all times.</p> <p>All vessels are requested to maintain a safe distance (0.5 km) from the survey vessel <i>Normand Mermaid</i> at all times.</p>		
5 Outline programme of works		
<i>Fugro Synergy</i>	Start Date: 14 June 2022	Estimated Duration: 4 months
<i>Normand Mermaid</i>	Start Date: 19 June 2022	Estimated Duration: 4 weeks

6 Vessel details	
Vessel Name:	Fugro Synergy
Vessel Type / LOA(m):	Geotechnical Vessel / 103.7 m
Vessel Function:	Geotechnical Drilling Vessel
VHF Call Sign:	C6XR3
MMSI:	311019800
Vessel Operator Contact details:	+47 2240 8044
	
Vessel Name:	Normand Mermaid
Vessel Type / LOA(m):	Survey/Supply Vessel
Vessel Function:	Geotechnical CPT Vessel
VHF Call Sign:	LAXH7
MMSI:	258612000
Vessel Operator Contact details:	+47 5285 6500
	

7 Project Contact Details

Tom Watson (NFFO)

Email: tomwatsonfleetwood@btinternet.com

Telephone: +44 790 317 3624

Company Fisheries Liaison Officers:

Beth Owens (MarineSpace)

Email: Yellow1-2CFLO@marinespace.co.uk

Telephone: +44 783 355 7808

Jonny Lewis (MarineSpace)

Email: Yellow1-2CFLO@marinespace.co.uk

Telephone: +44 781 764 4284

Figure 1: Morgan and Mona lease areas within which the offshore geotechnical survey will be undertaken

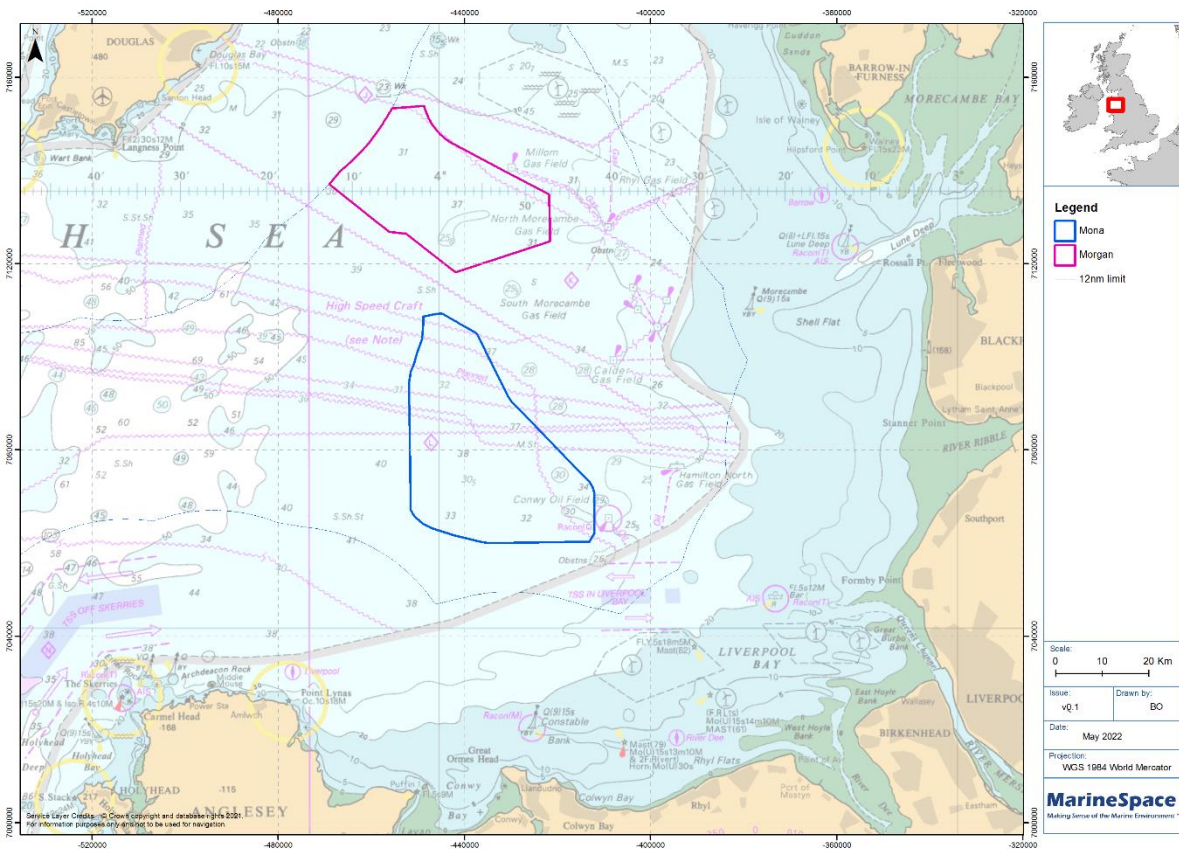


Table 1: Mona (simplified area)

Point	Latitude (WGS 84)	Longitude (WGS 84)
1	53°35.98087'N	003°42.67698'W
2	53°35.82461'N	003°54.34989'W
3	53°36.96451'N	004°2.09635'W
4	53°38.13101'N	004°3.48820'W
5	53°47.12778'N	004°3.68963'W
6	53°51.44343'N	004°1.96362'W
7	53°51.68117'N	003°59.85872'W
8	53°50.29748'N	003°55.64658'W
9	53°45.64654'N	003°51.75958'W
10	53°39.72052'N	003°41.98615'W
11	53°36.57738'N	003°42.08679'W
12	53°35.98087'N	003°42.67698'W

Table 2: Morgan (simplified area)

Point	Latitude (WGS84)	Longitude (WGS84)
1	53°56.57933	003°47.23536
2	53°54.46314	003°58.14858
3	53°57.22727	004°5.89162
4	54°0.47761	004°12.82853
5	54°5.64156	004°5.56186
6	54°5.81908	004°1.83026
7	53°59.78073	003°47.37243
8	53°56.57933	003°47.23536